

Flowsheet improvements for the real world



JAMESON 30
CELL YEARS

JAMESON
CONCENTRATOR

GLENCORE TECHNOLOGY

A GLENORE COMPANY

Jameson Cell flotation gives you more concentrate per dollar, per metre and per year

“ The Mount Isa Copper Concentrator has operated two Jameson Cells in pre-flotation and slag cleaner duties, very successfully, for over 15 years. In 2015 we installed three 18 downcomer Jameson Cells to replace the cleaner circuit. We've seen significant improvements in operability and maintenance intensity translating to improved recovery at a reduced cost.”

– Mount Isa Copper Concentrator, Mount Isa Mines

Jameson Cell at a glance

- Real-world success in 431 installations across 30 countries since launching in 1988
- It creates the smallest bubbles of any flotation cell, to deliver the best grade and recovery
- No moving parts for maximum availability and easy maintenance
- Strongest performance guarantee in the world
- 100% scale-up reliability



For more:
jamesoncell@glencore.com.au
Tel +61 7 3833 8500



Jameson Cell is the most effective froth flotation technology in the world and the reason is in the bubbles

The Jameson Cell creates smaller bubbles than any other flotation cell, so it creates more surface area for the particles to collide with and attach to – six times as much! Jameson Cell Flotation gives you more concentrate per dollar, year after year.

Jameson Cell has been used and proven in base and precious metals, coal, industrial minerals, oil sands and solvent extraction. There were 431 Jameson Cells installed around the world by the beginning of 2022.

The Jameson Cell has no moving parts, so it delivers reliable froth flotation with a promise of 99% availability. It's so predictable that it's guaranteed to deliver 100% scale-up performance, across all applications.

The Jameson Cell is smaller than many flotation cells because it doesn't need a long residence time. The Cell's downcomer sees feed pumped under high pressure to shear and entrain air from the atmosphere into fine bubbles. Particle to bubble interaction happens immediately in the downcomers high shear mixing zone.

Jameson Cell designs are flexible so they're ideal for any new project and a great option for low cost plant expansions. They're easy to install, very easy to operate, deliver excellent availability and are simple to maintain.

The inclusion of a recycle mechanism means the Jameson Cell is also very tolerant of feed variations, so they're made for the real world.

Glencore Technology provides accurate Jameson Cell design and scale up, engineering, manufacturing, flotation circuit design and review, installation support, cell commissioning and ongoing technical support.

A Jameson Cell is the most risk-mitigating and reliable froth flotation system you could buy.





How Jameson Cell delivers more concentrate and reduces risk for your project

1. More accurate scale-up

The Jameson Cell is proven in the real world. The hydrodynamics for particle collection inside the Jameson Cell are identical between laboratory, pilot plant and full scale Jameson Cells, so scale up is direct, proven and guaranteed.

For that reason, choosing a Jameson Cell for your flowsheet significantly reduces project risk. When you choose a Jameson Cell, the scope includes process and design, supply and commissioning by experts with real-world experience, for easy installation by a local contractor or EPCM.

2. Easier installation

There are no rotors, compressors or blowers to install, operate or maintain. There are no moving parts in the cell, and the only other equipment is a feed pump, so the Jameson Cell is quick and simple to install.

Your Jameson Cell undergoes a full trial assembly prior to delivery to your site. All the parts fit perfectly together during plant installation, making the whole process straightforward.

3. Simple operation and rugged tolerances

After installation, start up and commissioning is even simpler – it only needs the feed pump to operate to the designed flow and pressure. Commissioning is simple and the cell will reach design capacity quickly.

Your Jameson Cell will be sized to accommodate the design flowrate based on the number of downcomers. The tank can be designed to fit into restricted spaces, making it ideal for retrofits/replacement and expansion projects. The construction materials are flexible and your cell can be fabricated to suit your application.

4. Smaller bubbles and more concentrate

The Jameson is a step change in flotation efficiency. Feed is pumped into the downcomer, creating a high-pressure jet that entrains air. That aerated jet plunges into the slurry, where the kinetic energy of impact breaks the air into fine bubbles which collide with the particles, carrying them into the froth phase.

Those bubbles are smaller than other flotation systems, creating six times more surface area for the particles to attach to.

The rapid kinetics mean the Jameson Cell simply needs contact and

not residence time, so it's much smaller than equivalent mechanical and column cells and fewer units are required.

The grade of the concentrate is controlled by froth drainage and froth washing. Your Jameson Cell ensures an efficient, quiescent zone that maximises froth recovery, and is perfect for froth washing. The high carrying capacities mean you can process large tonnages in a small volume.

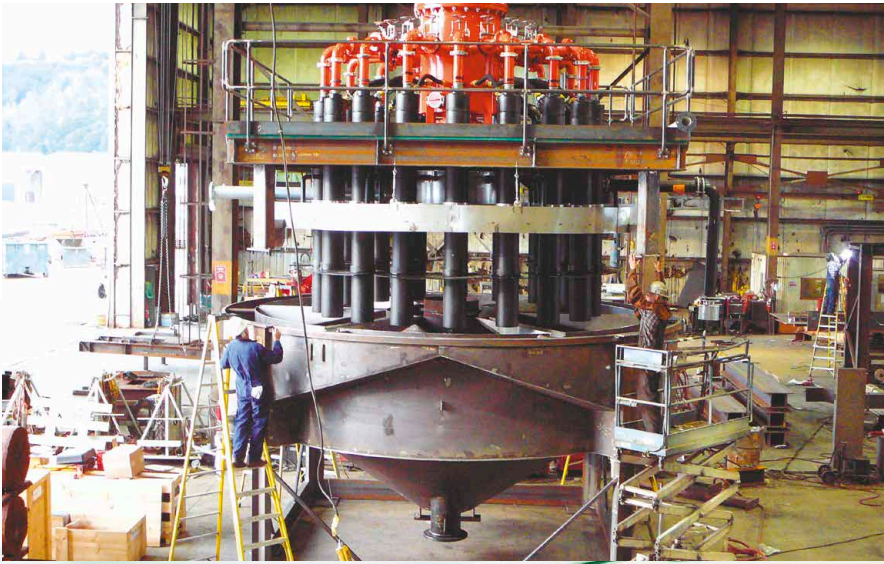
5. Easier operation and maintenance

Your Jameson Cell quickly reaches equilibrium and can continue operating if feed supply is interrupted.

Automatic tailings recycle eliminates fluctuating feed flow, to give you constant flow, consistent performance and a simple start-up.

The cell operates at a constant feed pressure and the hydrodynamic action inside the downcomer, essential for particle collection, is always consistent.

Maintenance is rare and simple. The highest wear component, the slurry lens orifice, has a wear life of more than five years! Downcomer maintenance can be performed while the cell is operating and takes less than 10 minutes.



How we help you get more from your Jameson Cell

Commitment in a partnership

The Jameson Cell was developed and proven in real world mining applications, so we've built up a suite of services in a Technology Partnership concept.

As a Partner:

- You will have access to training and learning opportunities at real client sites.
- You will always have access to our most experienced technology experts around the world.
- Your team will have opportunities to learn from other users.
- You will have access to service and parts help.
- You will secure an ongoing technical relationship with us.

A strong performance guarantee

Jameson Cell Flotation gives you more concentrate per dollar, year after year.

The commitment and agreement is complete:

- The lab results will scale up, with 100% accuracy.
- Your Jameson Cell will perform at a minimum of 99% availability.
- We will work with you to ensure your needs for feed variability, operations and maintenance will be built in.
- Training and support will be included.



Examples of how others have gained from their Jameson Cell



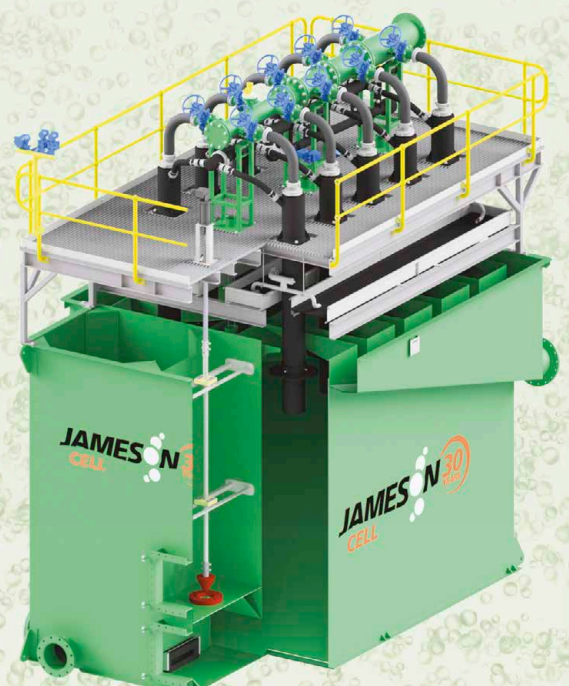
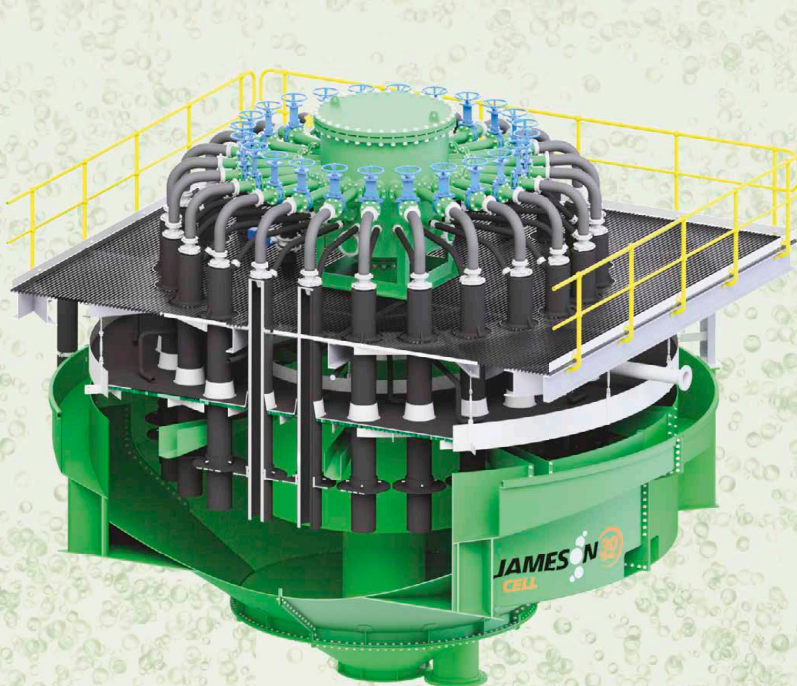
More concentrate, less energy and a broad range of applications

A set of just twelve Jameson Cells at Curragh (Australia) treats over 5 Mtpa of coal fines. Jameson Cells are also installed in coal operations in Africa, North America, Asia and Europe.

A retrofit Jameson Cell at Mount Isa achieved energy savings of up to 76% when it replaced 16 mechanical cells with one Jameson Cell.

The biggest operating cell, a J7250/10 recovering organics from 3,000 m³ per hour of raffinate at Olympic Dam's copper SX plant in Australia, was commissioned in 2003.

There are 431 Jameson Cells operating around the world.



Jameson Concentrator delivers more concentrate from less footprint, less capital and operating cost, using less energy

“ The Jameson Concentrator will reduce the flotation machines in Ozernoye from 63 to just 19, or by about two thirds. But it'll process the same 875 tph. This combination of performance and efficiency is important to us and to the mining future, considering the depletion of the mineral resource base.”

– Alexandr Kanarskiy
Chief Metallurgist, Ozernoye

Jameson Concentrator at a glance

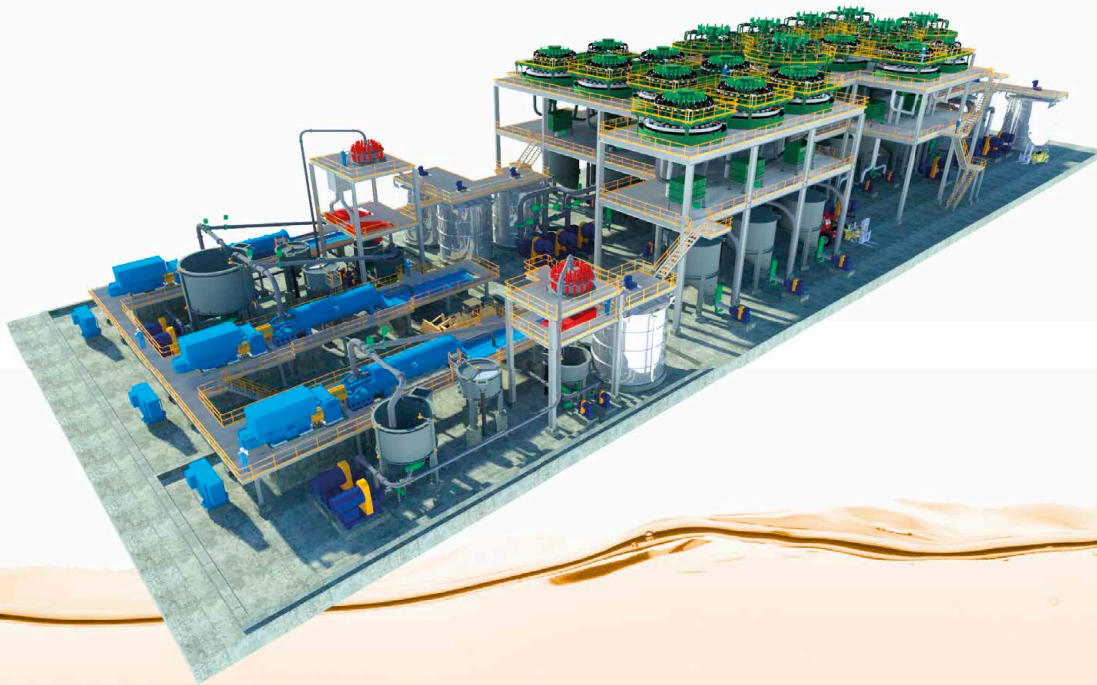
- Processes the same throughput for a smaller footprint
- Treats lower grade and complex ores cheaper and more efficiently
- Significantly smaller CapEx and OpEx and energy costs
- Less downtime, less maintenance
- Easily constructed by an EPCM to go-live quickly

JAMESON
CONCENTRATOR

For more:

glencoretechnology@glencore.com.au

Tel +61 7 3833 8500



Jameson Concentrator is the most efficient concentrator in the world – it delivers full-circuit capabilities from the most compact, simple and reliable flotation technology

Because mines increasingly have to go deeper, and into lower grade and more complex ores, operations need more efficient concentrators. The Jameson Concentrator takes new generation Jameson Cell and IsaMill™ technology to deliver a complete concentrator plant in the smallest footprint in the industry.

The Jameson Concentrator helps you solve the conflict between higher performance expectations and lower quality of ore bodies.

The Jameson Concentrator combines various configurations of Jameson Cell, modified and proven to process even larger volumes, and can add new generation small-footprint IsaMill™ technology where greater and precise liberation is needed.

The concentrator can process the same or greater throughputs with less equipment and less energy input – while producing exceptional metallurgical performance even from challenging orebodies.

This state-of-the-art full circuit concentrator is based on industry learnings from over 133 IsaMill™ and 431 Jameson Cell installations across 30 years.

The Jameson Concentrator offers the following game changing benefits:

- Low profile, small footprint plant layout
- Up to 60% footprint reduction for significant CAPEX savings
- From 30–60% of the energy of a conventional flotation circuit
- Significant reduction in moving parts and subsequent operating costs
- Faster, easier and cheaper maintenance, more availability
- Cell by-pass ability meaning high circuit availability
- No agitators, rotors or blowers in flotation and highly efficient grinding results in significantly lower power consumption
- Significantly greater and faster returns for treating lower grade ores and higher throughputs
- Circuit and equipment operational simplicity for consistently high performance
- Our flotation and milling technologies can be configured flexibly by an EPCM to deliver a custom concentrator from proven technology.



How Jameson Concentrator's core technologies work to deliver more for less

Jameson Cell

- High intensity, efficient flotation.
- Maximised metallurgical performance – demonstrated recovery increases of up to 6%.
- Quick & efficient particle-bubble Interaction – no short-circuiting.
- Reduction in residence time.
- Integrated wash water – upgrade equivalent to three stages of mechanical cell cleaning.
- Produce high grade concentrates.
- Proven performance across a wide range of size fractions, including coarse and ultra-fines.
- Scale-up directly 1:1 from lab-scale float results with high accuracy.
- Widely used across coal, precious and base metals, potash, and oil sands.

IsaMill™

- High energy efficiency grinding.
- Tight product size distributions.
- Enabling technology for any ores with F80 of up to 400µm and delivering a P80 down to 5µm
- Downstream processing benefits from using inert media.
- Grinding media only 10–70% of the cost versus vertical-style high SG mill media.
- Allows smaller, more efficient, higher grade/recovery circuits.
- Low profile meaning easier and safer operation and maintenance.

Product Range Development

- Recent release of additional models to both the IsaMill™ and Jameson Cell technologies.
- Expansion of range covers higher throughput requirements as new or existing mines treat lower grade – higher volume deposits.
- Products offered from single unit optimisation/expansion/ debottlenecking projects for existing sites through to full circuit solutions.

Examples

- **Philex operation, 1996.** Ten Jameson Cells replaced 50 conventional cells to treat 900 tph of copper and gold and saw up to a 4% increase in recovery.
- **Hubay's New Britannia operation** is currently completing an installation that sees four Jameson Cells replace the planned 11 conventional cells. Commissioning Q3 2021. EPCM is AECOM.
- **Ozernoye operation** has gone into execution with 19 Jameson Cells replacing what would have been 63 tank cells. Three new M20,000 IsaMill™ with 5 MW motors will deliver greater liberation. The footprint reduction is over 50%. Commissioning Q4 2022. EPCM is Engineering Dobersek.

Customisable flowsheets deployable by EPCMs

- Jameson Cell and IsaMill™ are highly customisable to suit any flowsheet requirement of a concentrator.
- The two technologies can be adapted by an operation or EPCM to suit the particular needs of the flowsheet.
- Models and in-depth specifications can be made available to EPCMs after an on-boarding program.
- Glencore Technology works with EPCMs on every continent to deliver an operation exactly what it needs.



Scan for more information

glencoretechnology.com

Follow us

[in linkedin.com/company/glencoretechnology](https://www.linkedin.com/company/glencoretechnology)

[t @GlencoreTech](https://twitter.com/GlencoreTech)

[f facebook.com/Expertise.in.Technology](https://www.facebook.com/Expertise.in.Technology)

Glencore Technology

Glencore Technology develops innovative products that help mining operations extract more from their flowsheet. ISASMELT™, IsaKidd™, IsaMill™, Jameson Cell and Albion Process™ have been developed in the real world and proven in more than 500 operations across every continent.

Many of our technologies have been developed and proven at our own sites, like ISASMELT™ and IsaMill™, which were pioneered by Mount Isa Mines and helped revolutionise mining and smelting processes all over the world.

Our approach is premised on a technology partnership to provide a full product and service offering, including process flow design, engineering, equipment supply, commissioning and operational expertise, and ongoing process and maintenance support.

Glencore

Glencore is one of the world's largest global diversified natural resource companies and a major producer and marketer of more than 90 commodities. The Group's operations comprise around 150 mining and metallurgical sites, oil production assets and agricultural facilities. With a strong footprint in both established and emerging regions for natural resources, Glencore's industrial and marketing activities are supported by a global network of more than 90 offices located in over 50 countries.

Glencore's customers are industrial consumers, such as those in the automotive, steel, power generation, oil and food processing sectors. We also provide financing, logistics and other services to producers and consumers of commodities. Glencore's companies employ around 146,000 people, including contractors.

Glencore is proud to be a member of the Voluntary Principles on Security and Human Rights and the International Council on Mining and Metals. We are an active participant in the Extractive Industries Transparency Initiative.

CONTACT

Glencore Technology Pty Limited

ABN 65 118 727 870

Level 29, 180 Ann Street
Brisbane QLD 4000
Australia

T. +61 7 3833 8500
E. jamesoncell@glencore.com.au

Chile · T. +56 2 2342 9078
Vancouver · T. +1 604 601 2070
South Africa · T. +27 11 772 0555

A GLENCORE COMPANY