



Albion Process™ Plants Nordenham (Glencore)

Commissioned: January 2011 · Location: Germany

FEED

- 36,000 tpa bulk lead/zinc concentrate (46.3% Zn, 8.66% Pb, 32.4% S)

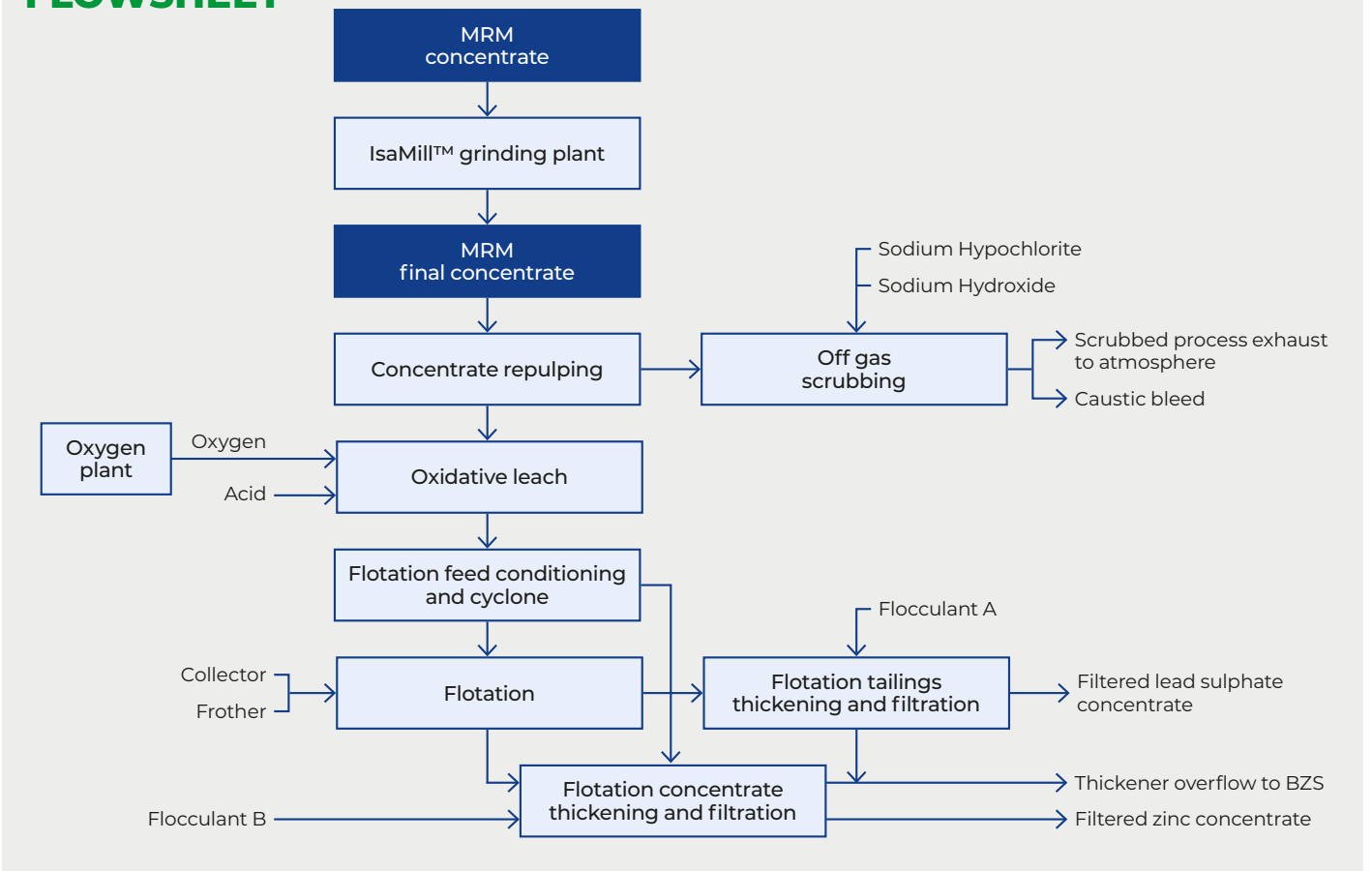
EQUIPMENT

- 1 x 800 m³ Oxidative reactor
- 1 x 280 m³ Oxidative reactor in series

PRODUCTS

- 16,000 tpa zinc cathode
- 98–99% zinc recovery

FLWSHEET



* All sources used are available on the Glencore Technology website.

GLENCORE TECHNOLOGY

albionprocess.com
glencoretechnology.com



Albion Process™ Plants

Ararat processing plant (GeoProMining)

Commissioned: January 2014 · Location: Armenia

FEED

- 120,000 tpa refractory pyrite concentrate

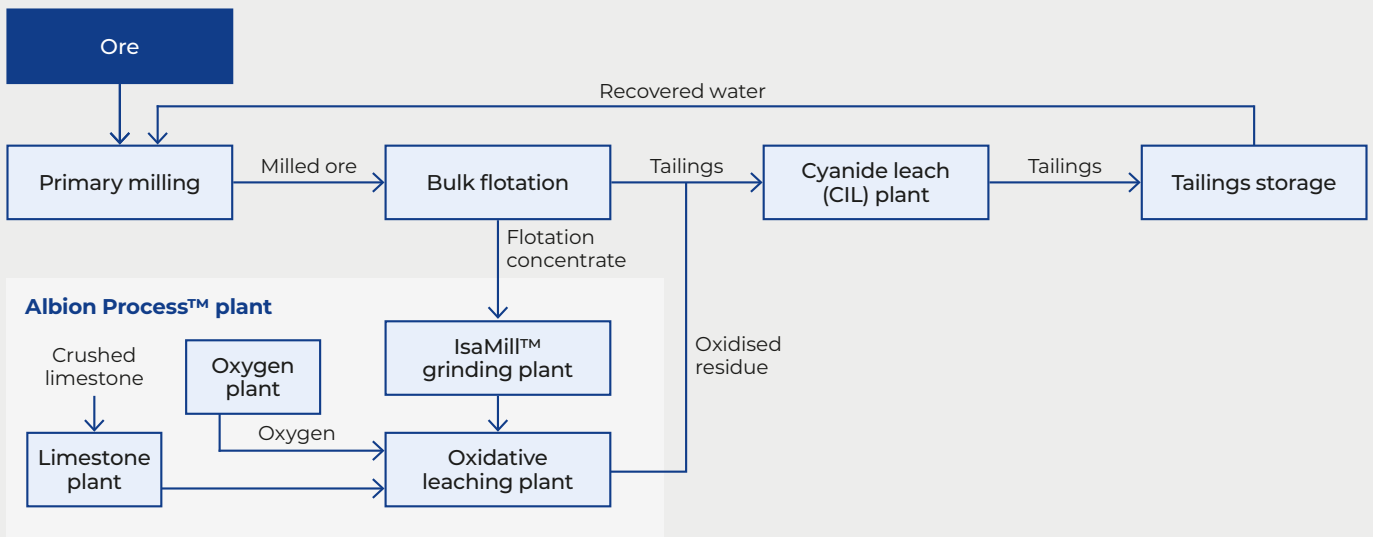
EQUIPMENT

- 9 x OLR0200 Oxidative leach reactor
- M3000 IsaMill™

PRODUCTS

- 120,000 oz gold per annum
- 92% recovery from residue
- 88% overall plant recovery

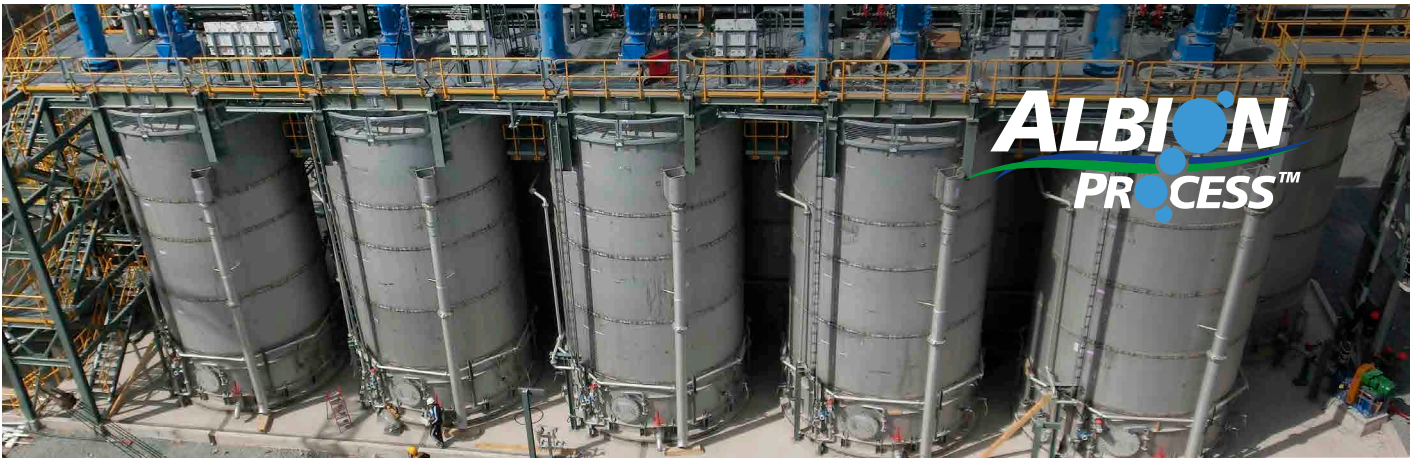
FLWSHEET



* All sources used are available on the Glencore Technology website.

GLENCORE TECHNOLOGY

albionprocess.com
glencoretechnology.com



Albion Process™ Plants San Juan de Neiva (Glencore)

Commissioned: 2010 · Location: Spain

FEED

- 8,000 tpa bulk lead/zinc concentrate (46.3% Zn, 8.66% Pb, 32.4% S)

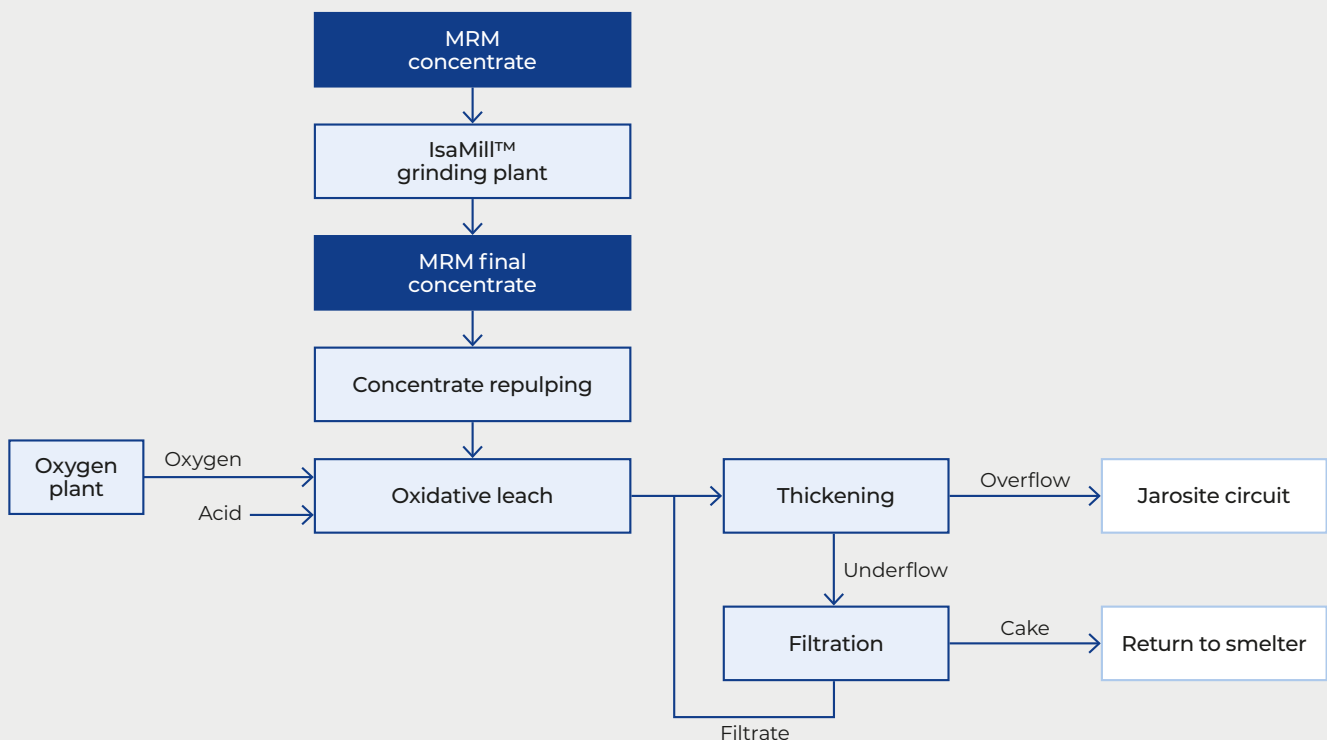
EQUIPMENT

- 1 x 280 m³ Oxidative leach reactor

PRODUCTS

- 5,000 tpa zinc cathode
- >98% zinc recovery

FLWSHEET



* All sources used are available on the Glencore Technology website.

GLENCORE TECHNOLOGY

albionprocess.com
glencoretechnology.com



AlbiON Process™ Plants Sable (Jubilee Metals Group)

Commissioned: 2017 · Location: Zambia

FEED

- 12,000 tpa copper concentrate (22–26% Cu)

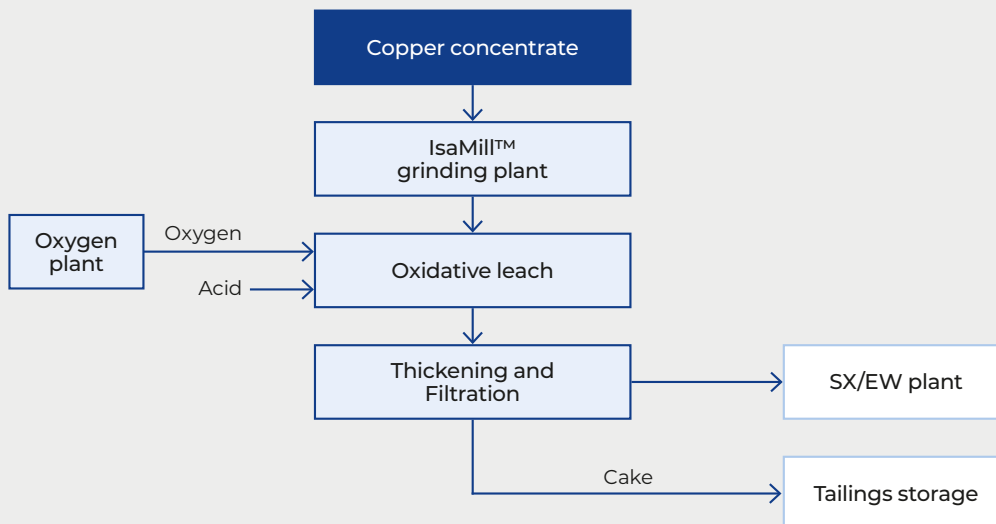
EQUIPMENT

- 3 x 100 m³ Oxidative leach reactor
- M100 IsaMill™

PRODUCTS

- Copper cathode from existing EW plant

FLWSHEET



* All sources used are available on the Glencore Technology website.

GLENCORE TECHNOLOGY

albionprocess.com
glencoretechnology.com



Albion Process™ Plants McArthur River Mine (Glencore)

Commissioned: 2014 · Location: Australia

FEED

- Fine ground bulk lead/zinc concentrate from concentrator

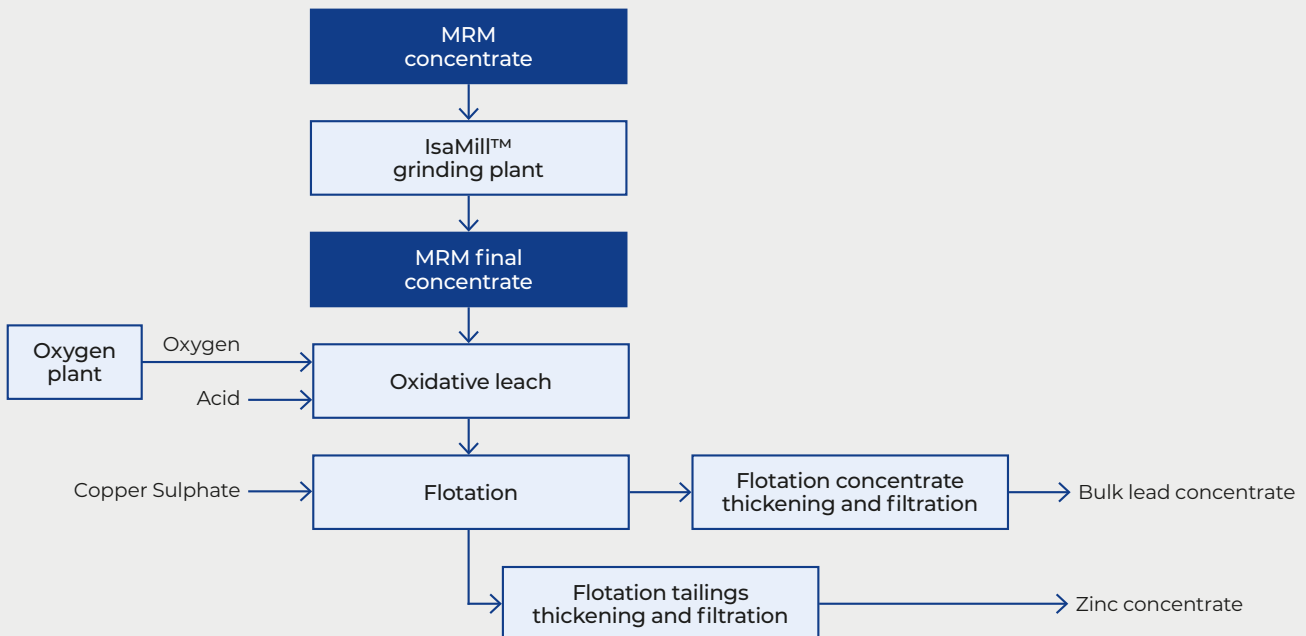
EQUIPMENT

- 5 x 800 m³ Oxidative leach reactor

PRODUCTS

- 150,000 tpa cleaned zinc concentrate
- Lead residue to Mount Isa ISASMELT™ smelter

FLWSHEET



* All sources used are available on the Glencore Technology website.

GLENCORE TECHNOLOGY

albionprocess.com
glencoretechnology.com



Albion Process™ Plants

Las Lagunas Tailings (PanTerra Gold)

Operated: 2012–2019 · Location: Dominican Republic

FEED

- 224,000 tpa complex arsenic/gold feed

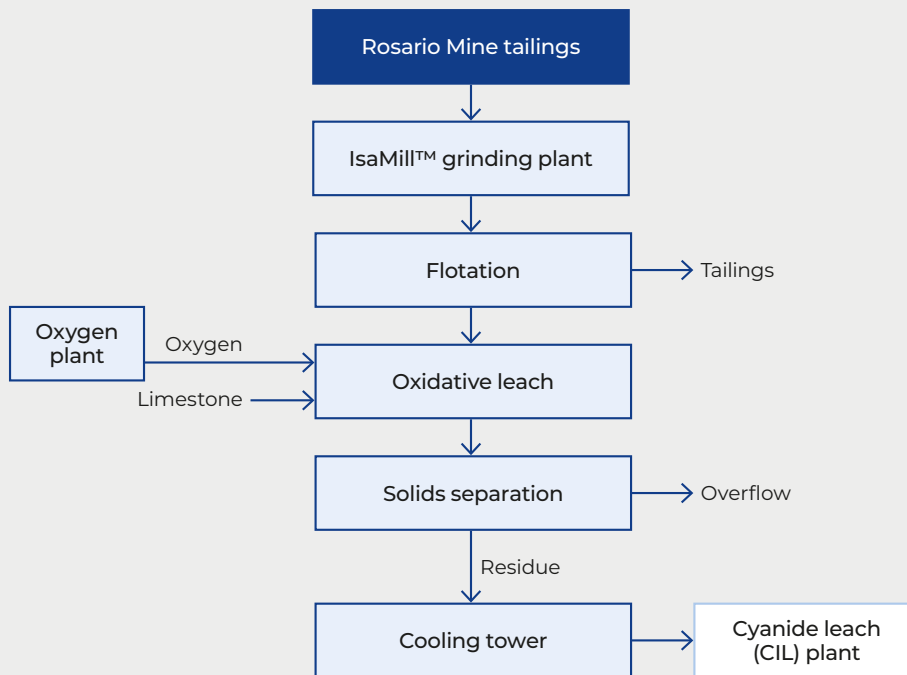
EQUIPMENT

- 5 x 600 m³ Oxidative leach reactor
- M3000 IsaMill™

PRODUCTS

- 80,000 oz pa gold
- >80% gold recovery

FLWSHEET



* All sources used are available on the Glencore Technology website.

GLENCORE TECHNOLOGY

albionprocess.com
glencoretechnology.com



Albion Process™ Plants Mount Isa Mines Smelter (Glencore)

Commissioned: 2007 · Location: Australia

FEED

- 20,000 tpa copper concentrate (19.3% Cu)
- 19,800 tpa smelter dust (22% Cu)

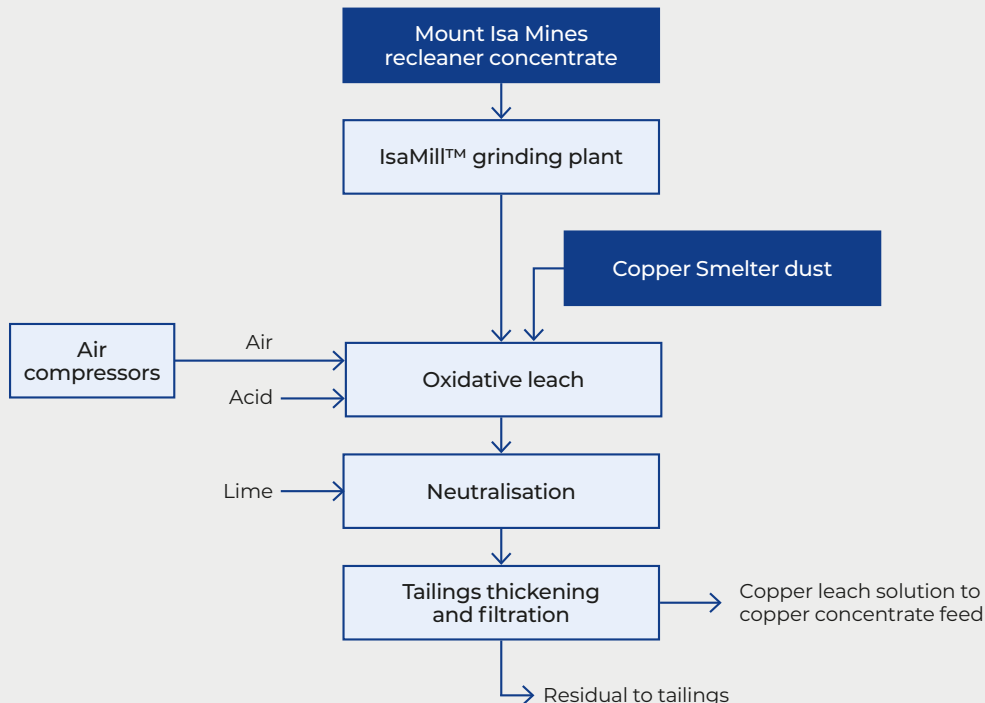
EQUIPMENT

- 1 x 100 m³ Oxidative reactor
- 2 x 350 m³ Oxidative reactors in series
- M1000 IsaMill™

PRODUCTS

- 30 g/L copper in solution
- >95% copper recovery

FLWSHEET



* All sources used are available on the Glencore Technology website.

GLENCORE TECHNOLOGY

albionprocess.com
glencoretechnology.com